



ASHIRASE

Quick Start Guide

Table of Contents

1. Getting Started

- App Installation
- How to Pair the Device
- Attach the device to your shoes

2. Using Navigation

- How to Practice
- How to Start Navigation

3. Adjusting the Vibration Strength

App Installation

1. Install the **ASHIRASE** app

If you are using an iPhone, please install it from the link below:

<https://t.co/8DJTA8qEdz>

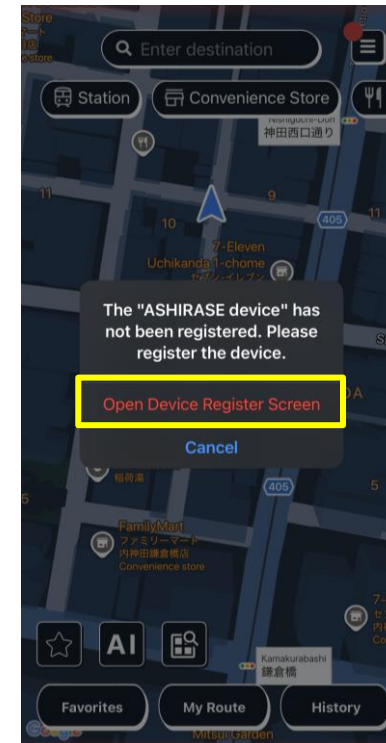
2. Create a New Account

How to Pair the Device

1. Press and hold the power button on both ASHIRASE devices for about 8 seconds to enter pairing mode. The LED will flash white in pairing mode.

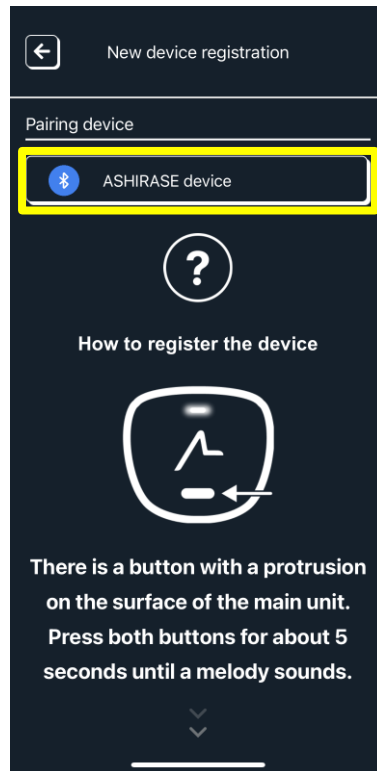


2. Open the ASHIRASE app and tap "Open Device Register Screen" on the pop-up.

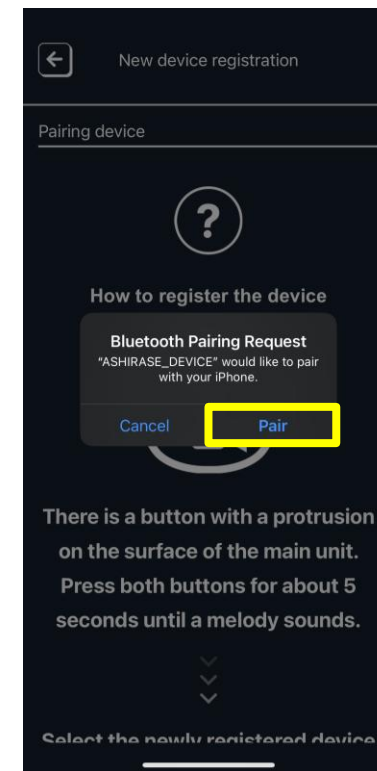


How to Pair the Device

3. Tap the "ASHIRASE Device" button that appears on the app screen.



4. When the "Bluetooth Request" pop-up appears, tap "Pair" to register each device separately (left and right).



Attach the device to your shoes

Check the Orientation of the Device:



Attach the device to your shoes

1. Insert the shorter belt into the inside of the shoe, toward the top (instep).



2. Insert the heel-side belt inside the shoe as well.



3. Attach the clip to the side of the shoe.



4. Slide the belt forward to adjust the position.



Attach the device to your shoes



【①Adjust the Position】

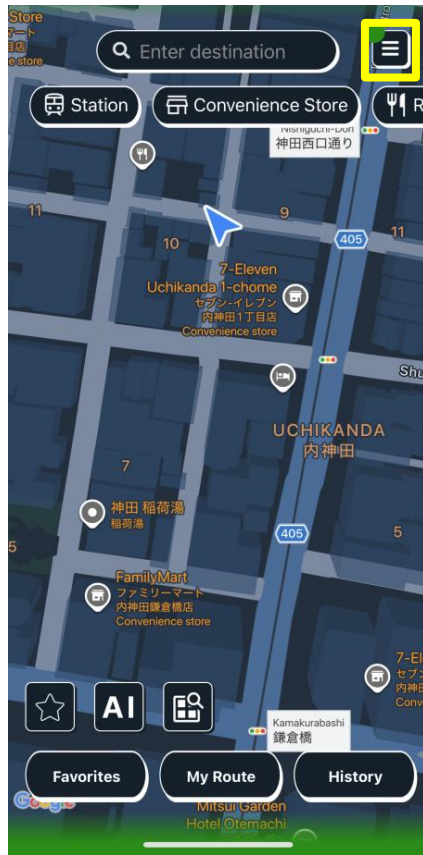
- Adjust the end of the heel-side belt so that it is centered on the heel. You can slide the external lateral-side belt forward to make this adjustment.
- Make sure the belt stands upright and does not lie flat on the insole.

【②Attach the Clip of the Main Unit】

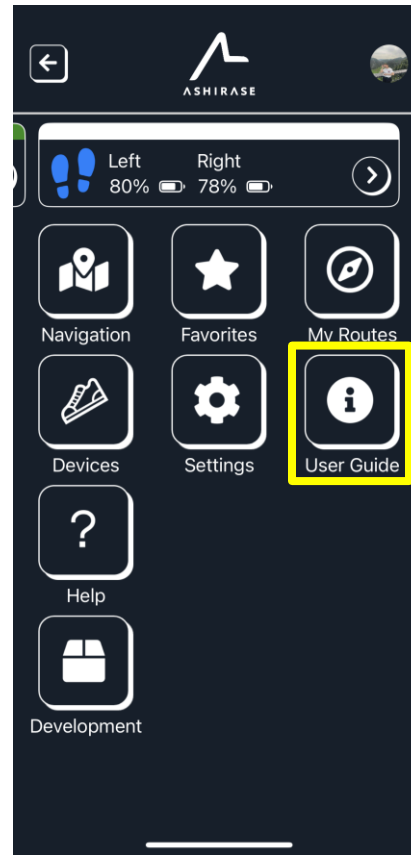
- Securely attach the clip near the lace holes of the shoe.
- Attach the clip around the 10 o'clock position on the left foot and around the 2 o'clock position on the right foot.

How to Practice

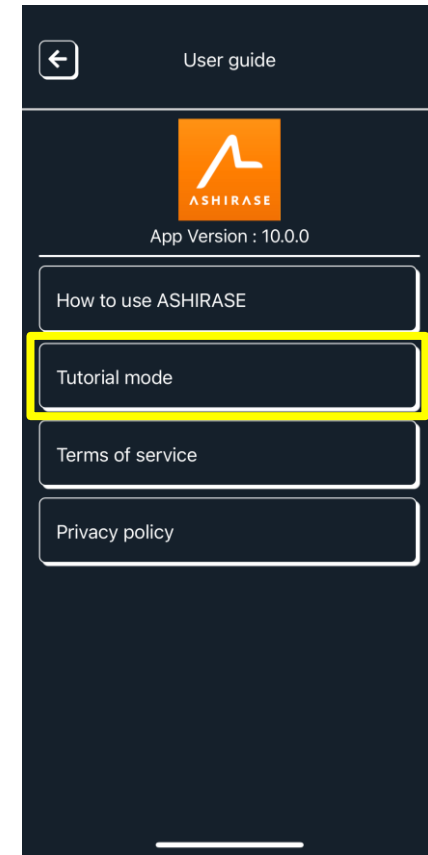
1. Open the app and tap the “Menu” button in the top right corner.



2. Tap “User Guide.”

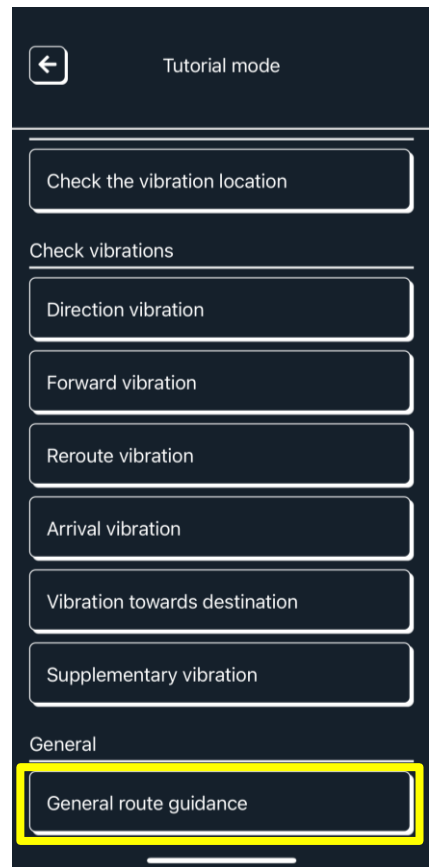


3. Tap “Tutorial Mode.”

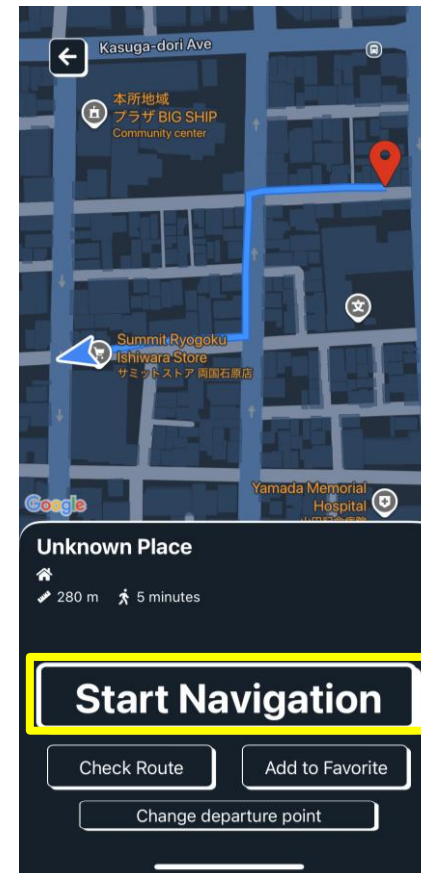


How to Practice

4. Tap “General route guidance.”



5. Tap “Start Navigation.”

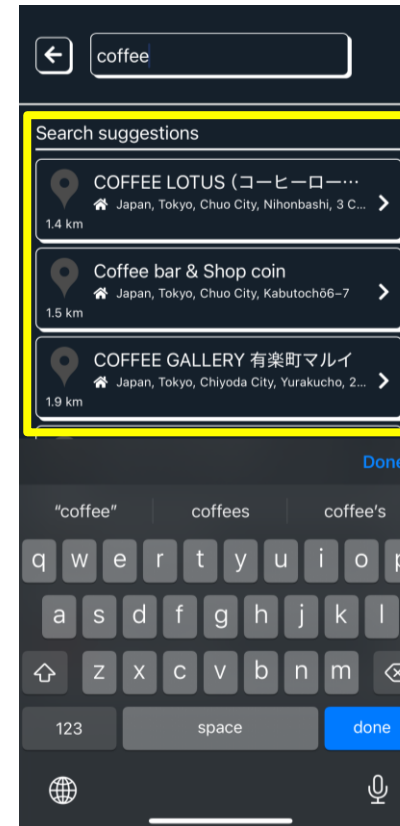


How to Start Navigation

1. Enter the destination in the "Destination Input Field" at the top of the map screen.

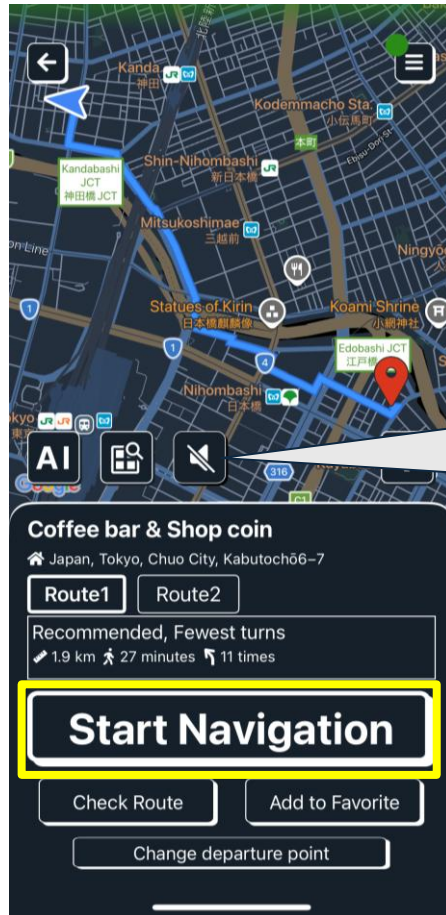


2. You can search by facility name or address.



How to Start Navigation

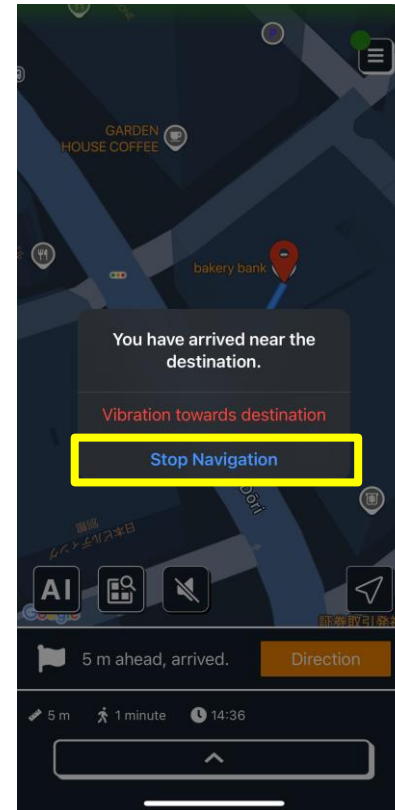
3. Tap the “Start Navigation” button.



Tap the megaphone icon to turn off the voice guidance.



4. When you arrive, tap “End Navigation” button, or tap your foot on the ground twice, two times in a row, to finish.



Adjusting the Vibration Strength

While the device is connected, tap the button at the top of the app's menu screen that shows the battery level. You can then adjust the vibration strength in three levels under "Vibration Strength."

